

Section 4 – Ship Access

All access should be marked on the ship's GA plan and documented in the relevant Access table.

Access table	Access points
Access 1 – to vessel (possible unauthorized access points)	Mooring lines Anchor chains Pilot ladders/Jacobs ladder Gangways Ramps Cranes Hoists Bunker Stations Discharge hoses
Access 2 – within vessel	Doors Ramps Emergency/Escape hatches Cargo hatches, doors, ports Ports, scuttles



Information must be included for:

In port alongside

At anchor

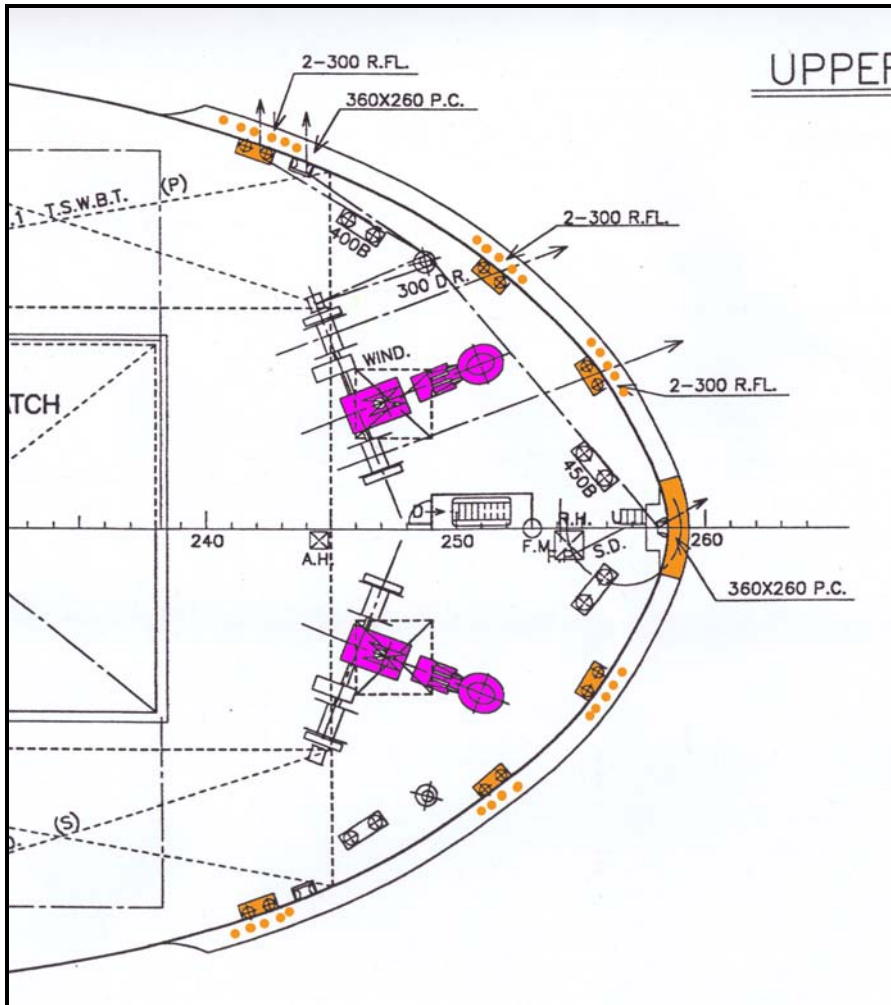
At sea under passage

Each door or entry point requires an identification number. The easiest way to do this is deck by deck using the ship's GA plan and confirmed during the On-scene Security Survey. See the example GA plan and tables on the following pages.

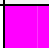
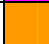
ISPS Code – Practical Pack



An excerpt from a partially marked up General Arrangement Plan, showing Access To vessel:



Key:

Colour		Description
Magenta		Anchor Chains
Brown		Mooring Lines

ISPS Code – Practical Pack



Access 1 – to vessel

To vessel	No	Location	Level 1		Level 2		Level 3		Remarks
Type			Yes	No	Yes	No	Yes	No	
Mooring Lines Monitor visually Monitor by cameras Use of alarms and sensors Use of security lighting Man access points Lock, secure access points Checked at intervals by security patrol Checked regularly by security patrol	<i>Var</i>	<i>Bow, stern, amidships</i>							
Anchor chains Monitor visually Monitor by cameras Use of alarms and sensors Use of security lighting Man access points Lock, secure access points Checked at intervals by security patrol Checked regularly by security patrol	<i>2</i>	<i>1. Bow port</i> <i>2. Bow stbd</i>							

ISPS Code – Practical Pack

To vessel	No	Location	Level 1		Level 2		Level 3		Remarks
Type			Yes	No	Yes	No	Yes	No	
Pilot ladder/Jacobs ladder Secured in board when not in use Manned when in use Checked at intervals by security patrol Checked regularly by security patrol Only used with Masters authority or for emergency	2	1. Port side mid ship 2. Starboard side mid ship							
Gangways Monitor visually Monitor by cameras Use of alarms and sensors Use of security lighting Man access points Lock, secure access points Checked at intervals by security patrol Checked regularly by security patrol	1	Port side							
Ramps Monitor visually Monitor by cameras Use of alarms and sensors Use of security lighting Man access points Lock, secure access points Checked at intervals by security patrol Checked regularly by security patrol	NIL								

ISPS Code – Practical Pack

To vessel	No	Location	Level 1		Level 2		Level 3		Remarks
			Yes	No	Yes	No	Yes	No	
Type Cranes (ship) Manned when in use Secured inboard when not in use Not to be used	4	1. Port mid ship 2. Stbd mid ship 3. Port stern 4. Stbd stern							
Hoists Manned when in use Secured inboard when not in use Not to be used	NIL								
Hoses (Bunkers, etc) Monitor visually Monitor by cameras Use of security lighting Manned when in use Checked at intervals by security patrol Checked regularly by security patrol Not to be used	NIL								
Cargo hoses Monitor visually Monitor by cameras Use of security lighting Manned when in use Checked at intervals by security patrol Checked regularly by security patrol Not to be used	10	1. 1-5 manifold Port mid ship 2. 6-10 manifold Stbd mid ship							

ISPS Code – Practical Pack

To vessel	No	Location	Level 1		Level 2		Level 3		Remarks
Type			Yes	No	Yes	No	Yes	No	
Any other (paint punts, etc)									

ISPS Code – Practical Pack



Access 2 – within vessel

Within vessel	No	Location	Level 1		Level 2		Level 3		Remarks
Deck			Open	Lock	Open	Lock	Open	Lock	
Nav Bridge									
Sliding doors	2	NBD 1. Port side in to bridge NBD 2. Stbd side in to bridge							
E Deck	NIL								
D Deck									
External door	3	D1. Port side in to lift D2. Port side of stbd side stairwell D3. Stbd side of stbd side stairwell							
C Deck									
External door	2	C1. Port side door to main passage C2. Stbd side door to main passage							

ISPS Code – Practical Pack

Within vessel	No	Location	Level 1		Level 2		Level 3		Remarks
Deck			Open	Lock	Open	Lock	Open	Lock	
B Deck									
External door	2	B1. Port side door to main passage B2. Stbd side door to main passage							

ISPS Code – Practical Pack

Deck	No	Location	Level 1		Level 2		Level 3		Remarks
Doors			Open	Lock	Open	Lock	Open	Lock	
A Deck									
External door	4	A1. Port side fwd to fwd passage A2. Port side aft to aft passage A3. Stbd side fwd to fwd passage A4. Stbd side aft to aft passage							
Upper Deck									
External door	2	UD1. Port side to main passage UD2. Stbd side to main passage							

ISPS Code – Practical Pack

Deck	No	Location	Level 1		Level 2		Level 3		Remarks
Doors			Open	Lock	Open	Lock	Open	Lock	
Sunken Deck									
External door	5	SD1. Port side aft to main passage SD2. Inboard aft to Provision Store SD3. Stbd inboard aft to main passage SD4. Stbd side aft to Fire cont. foam room SD5. Port side fwd funnel air lock to engine casing SD6. Stbd aft funnel to steering gear room and emergency fire pump room							
Ramp									

ISPS Code – Practical Pack

Deck	No	Location	Level 1		Level 2		Level 3		Remarks
			Open	Lock	Open	Lock	Open	Lock	
Doors									
Sunken Deck									
Emergency/escape hatches	1	<i>SD7. Aft of funnel to steering gear room</i>							
Cargo hatches									
Ports, scuttles									